

# AE-31 Series 30 Quart Mixer

**Ideal for :**

- Mid-Sized Diners      ▪ School Cafeterias
- Professional Caterers   ▪ Mid-Sized Bakeries

American Eagle ® AE-31 series mixers are part of our comprehensive line of heavy-duty, high-quality machines. We offer unbeatable value pricing for the total package with all-inclusive accessories. The durable construction assures overall low cost of ownership. Contact American Eagle today to find the right sized mixer for you!

**Standard Features**

- 100% gear-driven transmission, long life gear box
- Precision-milled, heat-treated steel alloy gears for durability
- Universal #12 Hub for attachment compatibility
- Recommended for floor placement
- Heavy-duty construction and powerful motor
- Convenient push button controls, 3-speed gear lever
- Easy maintenance and time-saving versatility
- Approvals: NSF No. 8, ETL, CE, CSA

**Standard Accessories**

- Durable aluminum alloy spiral dough arm
- Lightweight aluminum alloy flat beater
- Stainless steel wire whip
- 30 Qt. high-polish, stainless steel bowl
- 15 Minute Timer

**Deluxe Safety Guard**

- High-polish heavy duty stainless steel
- Easy-slide opening with interlocking safety mechanism
- Securely welded ingredient chute for added recipe versatility
- See through design for greater convenience

**Other Deluxe Options**

- AE-S12 Vegetable Slicer Attachment
- AE-V12 Vegetable Shredder Attachment
- AE-G12NH Meat Grinder Attachment
- AE-T12H Meat Tenderizer Attachment

**Standard Warranty**

- 1 year parts and ninety days labor
- Must register with American Eagle



American Eagle: Value, Quality, and Reliability



**Specifications Summary (see reverse for detailed)**

Model	Safety Guard	Agitator (RPMs)	Motor	Voltage V/Hz/Ph	Machine Dimensions W x D x H	Ship Weight
AE-31	No	95 190 350	1 H.P.	115/60/1	22.35" x 25.49" x 45.1"	510 Lbs (453 net)
AE-31A	Yes	95 190 350	1 H.P.	115/60/1	22.35" x 25.49" x 45.1"	520 Lbs (462 net)



3557 S. Halsted St, Chicago, Illinois 60609  
800-836-5756 • sales@ameagle.biz

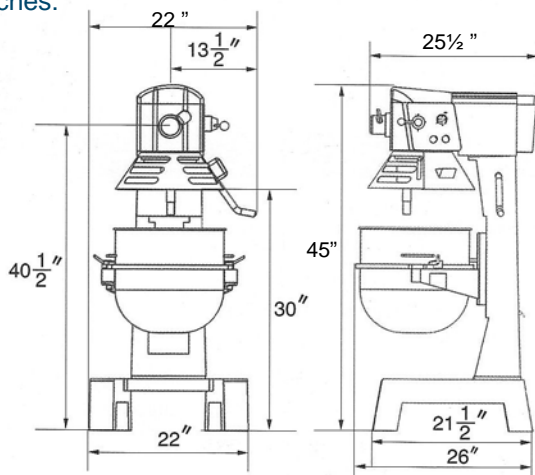
# AE-31 Series 30 Quart Mixers

## Specifications

*Due to continuous product improvement, specifications may change without notice*

<p><b>Motor:</b> 1 HP &amp; 16 Amps. Motor overload protection w/ reset button. Machine must be powered off and on after the overload is triggered.</p> <p><b>Transmission:</b> Easy-to-maintain transmission and lithium grease lasts for years. Long lasting gears and shaft made from heat-treated steel alloy, and mounted on ball bearings.</p> <p><b>Electrical:</b> 6 ft. flexible three wire cord and ground plug. 115V /60 Hz / 1Ph (16 Amps) 220V /60 Hz / 3 Ph (8 Amps)* <i>*Special order only</i></p> <p><b>Construction:</b> High polish stainless steel and aluminum alloy is sanitary, lightweight, and durable. Quality materials make this mixer easy to maintain with low cost of ownership.</p> <p><b>Finish:</b> NSF approved enamel gray paint. Heat treated to resist rust, scratches, and dents.</p> <p><b>Agitator Speeds:</b> Stop machine to shift speed gears</p> <table border="0"> <tr> <td>1st Low</td> <td>95 rpm</td> </tr> <tr> <td>2nd Med</td> <td>190 rpm</td> </tr> <tr> <td>3rd High</td> <td>350 rpm</td> </tr> </table>	1st Low	95 rpm	2nd Med	190 rpm	3rd High	350 rpm	<p><b>Deluxe Options</b></p> <p><b>Safety Guard</b> Heavy gauged metal safety guard stands up to the toughest challenges. High polish stainless steel meets food industry sanitation needs. Interlocking mechanism prevents mixing until guard is fully closed. Ingredient chute securely welded and fully attached.</p> <p><b>Shipping Information:</b> Freight Class: 85 Net Weight: 453 lbs. (206 kgs) Shipping Weight: 519.2 lbs.(231.8 kgs.) Net Weight: 462 lbs. (210 kgs)* Shipping Weight: 519.2 lbs.(236 kgs.)* Packing Crate: 28.6" x 24.71" x 52.94" (73cm x 63cm x 135cm) <i>*Indicates weight inclusive of guard.</i> Crates are affixed to a skid (pallet). The weight and dimensions of this skid are included above and may vary from shipment to shipment.</p> <p><b>Machine Dimensions:</b> Foot Print = 21.5" x 22.0" (54.6cm x 55.9cm) Overall Width = 22.35" (57 cm) Overall Length = 25.49" (65 cm) Overall Height = 45.1" (115 cm)</p>	<p><b>#12 Compatible Attachments</b> Your AE-31 mixer comes equipped with a universal #12 hub capable of extending the versatility and function of your mixer. We recommend these great American Eagle products:</p> <p><b>AE-T12H Meat Tenderizer Head</b> Attaches to the #12 Universal hub and transforms tougher meats into delicious, salable product. See meat tenderizer spec sheet for details.</p> <p><b>AE-V12 Shredder/AE-S12 Slicer</b> Featuring 100% Stainless steel plates, both shredder and slicer fit into the universal size #12 hub. Will handle vegetable, fruit, and cheese. See shredder spec sheet for details.</p> <p><b>AE-G12NH Meat Grinder Head</b> 100% stainless steel delivers exceptional performance and durability. Choose from 10 different plate sizes and make everything from hamburger to sausage. See meat grinder spec sheet for details.</p>
1st Low	95 rpm							
2nd Med	190 rpm							
3rd High	350 rpm							

Inches:



Millimeters:

